

- b. For **Google Chrome** or **Microsoft Edge**, click **Web Viewer** from the left menu. The Web Viewer will be downloaded to your computer. After the connection is established, the viewer's user interface is the same as that of Internet Explorer.

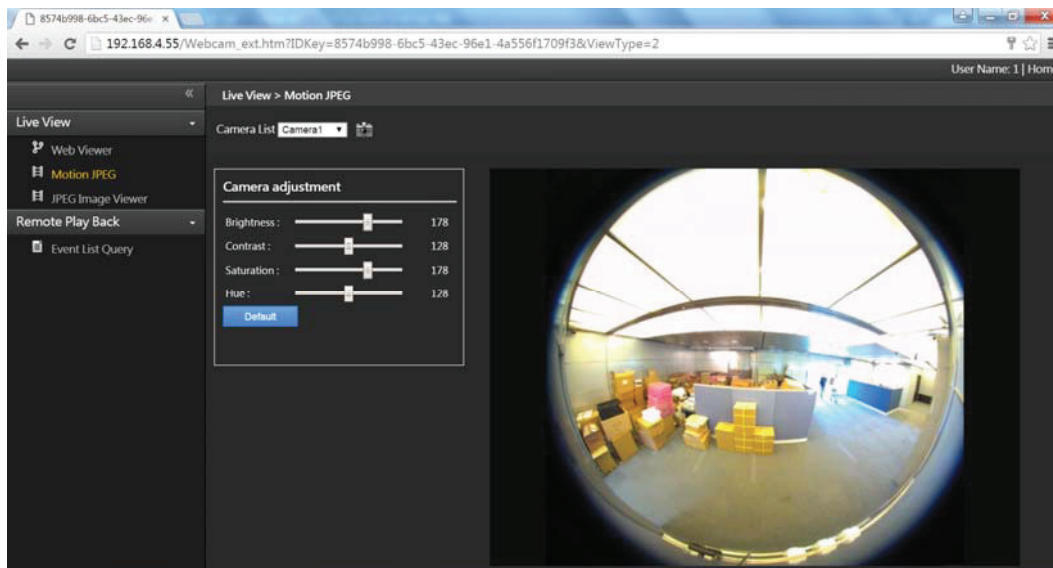


Figure 7-3 Live View on Google Chrome: an Example of Non-IE Browser User Interface

The following WebCam server features will be introduced later in this chapter:

IE Browser's WebCam Server Features

Name	Description
Live View	Accesses different types of live view viewers. See <i>Single View Viewer</i> , <i>2-Window Viewer</i> , <i>Multi-Window Viewer</i> , and <i>JPEG Image Viewer</i> later in this chapter.
Remote Play Back	Accesses remote playback options. See <i>Event List Query</i> later in this chapter.
Remote ViewLog	Accesses the Remote ViewLog. See <i>Remote ViewLog</i> later in this chapter.
Remote E-Map	Accesses E-Maps remotely set up at the GV-VMS. See <i>E-Map Application</i> in Chapter 8.
Download	Accesses the Download Center. This function offers optional viewing programs to be downloaded to the local PC. See <i>Download Center</i> later in this chapter.

Non-IE Browsers' WebCam Server Features

Different browsers have slightly different user interfaces.

Name	Description
	Accesses different types of live view viewers. See <i>Single View Viewer</i> , <i>Multi-Window Viewer</i> , and <i>JPEG Image Viewer</i> later in this chapter.
Live View	Slightly different from the user interface of Mozilla Firefox, Google Chrome and Microsoft Edge allow users to download Web Viewer, which has the same user interface as that of Internet Explorer.
Remote Play Back	Accesses remote playback options. See <i>Event List Query</i> and <i>Remote Playback</i> later in this chapter.