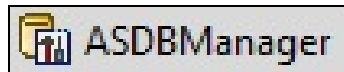
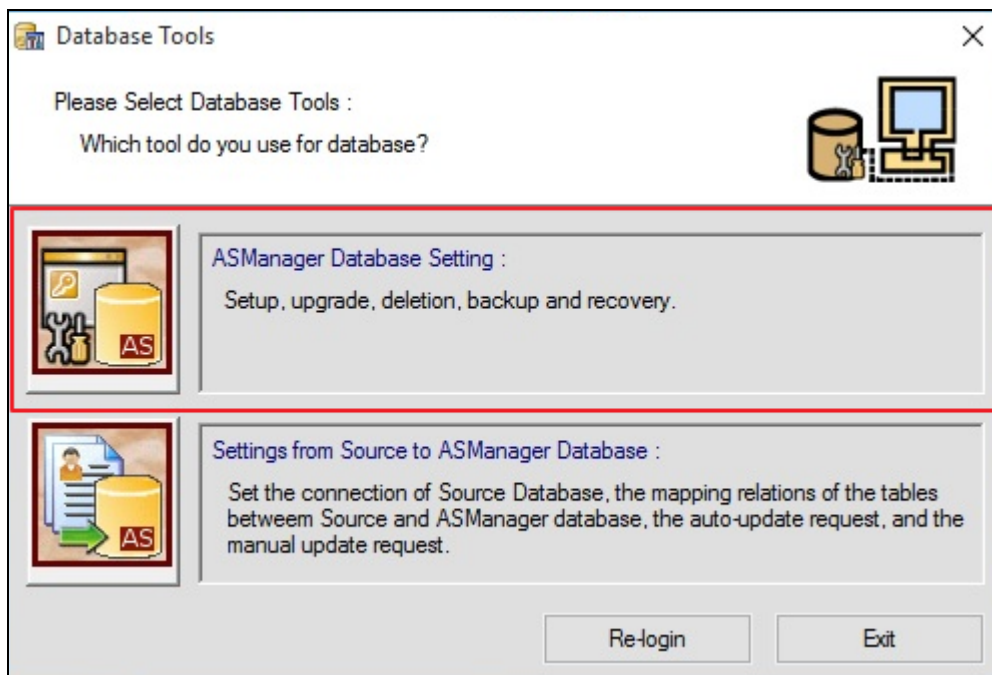


# Setting ASDBManager for automatic back up:

1. Browse into ASManager installation directory (default: C:\Access Control\ASManager) and launch ASDBManager.exe.



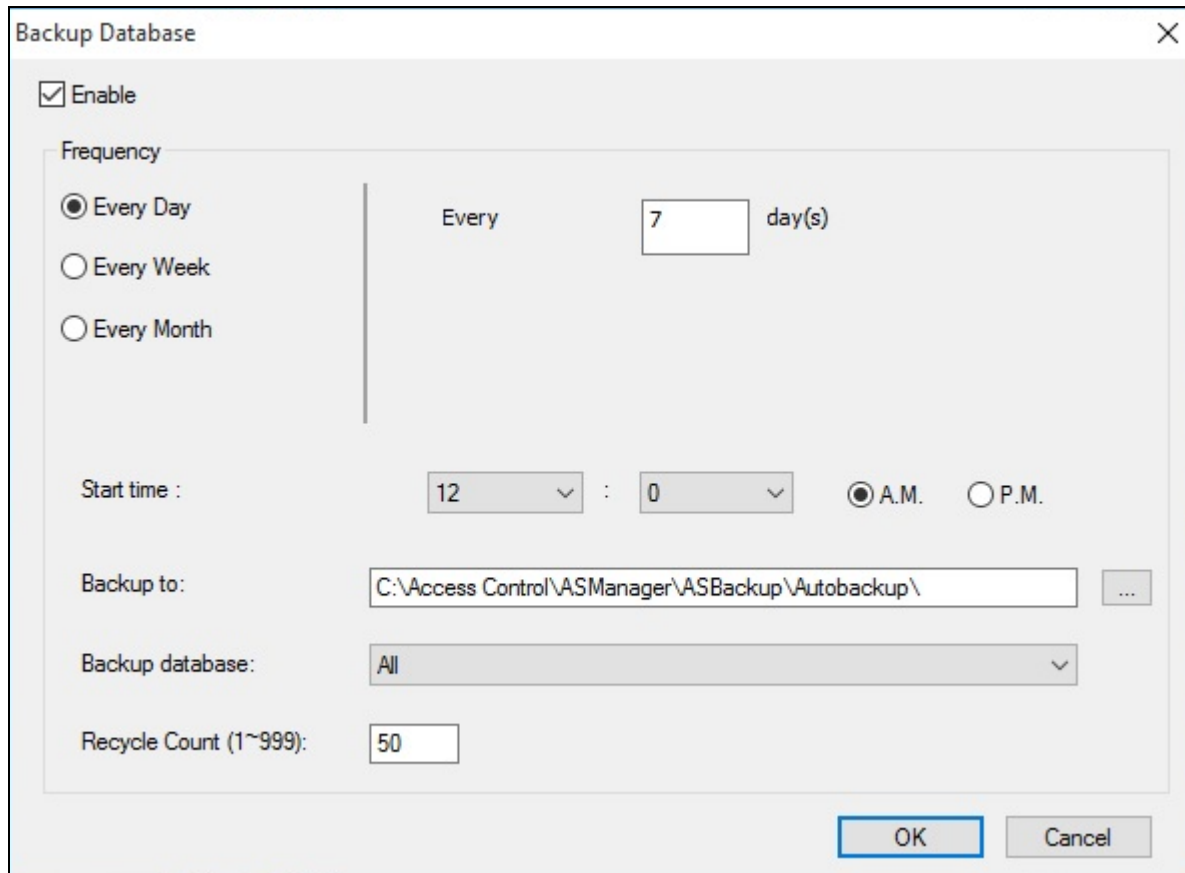
2. Click on ASManager Database Setting under Database Tools



3. Under ASManager Database Setting window, click on Schedule button as shown located below.



#### 4. Tick "Enable" on the top left corner



#### Backup Database options:

##### Frequency

- a. **Every Day: Backup Database on daily basis.**
- b. **Every Week: Backup Database based on selected weeks. (Multiple selection supported)**
- c. **Every Month: Backup Database based on selected month(s) . (Multiple selection supported)**

##### Start time: Backup Start time

##### Backup to: Path to store backup files.

##### Backup Database type

- a. **All : Backup both ASManager configuration and logs**
- b. **Config : Only backup ASManager configuration**
- c. **Log : Only Backup ASManager logs**

**Recycle Count: How many copies of backup can be stored before recycle runs and clean the earliest backup**