



## How to Connect Wiegand Readers to PC LPR

Article ID: **GV4-19-10-30-Ch**

Release Date: **10/30/2019**

### Applied to

GV-ASManager V5.1.0 or later + GV-VMS V17.1 or later + GV-LPR Plugin V5.1.2 or later  
GV-I/O Box 4E V2.03 or later + Wiegand Readers

### Summary

When using GV-VMS LPR for license-plate-recognition access control on GV-ASManager, users can also connect the GV-VMS LPR to an extended Wiegand reader, via GV-I/O Box 4E, to perform the following authentication modes: *License Plate + Card*, *License Plate or Card* or *Card Only*.



---

### Note:

1. The GV-I/O Box 4E, GV-VMS LPR and GV-ASManager must be connected to the same LAN.
  2. All access events done through the Wiegand Reader connected to GV-VMS LPR are recorded within the LPR Monitor (**Monitoring > New LPR Monitor**) of GV-ASManager.
  3. Snapshots of card access events captured under *License Plate or Card* and *Card Only* modes may not include the license plate of the vehicle.
  4. When using *License Plate + Card* mode, the card swipe needs to be done within 10 seconds after the license plate recognition, and vice versa.
-



## Procedures

To connect a Wiegand Reader to GV-VMS LPR, follow the steps below:

- **Step 1 Connecting the Wiegand Reader to GV-I/O Box 4E via Wiegand**

Connect the Wiegand Reader to GV-I/O Box 4E's Wiegand A or B. For details, see [1.4 Overview](#) in [GV-I/O Box 4E Installation Guide](#).

- **Step 2 Adding GV-I/O Box 4E to GV-VMS LPR**

Add the GV-I/O Box 4E to GV-VMS LPR and enable VMS's LPR service, see [6.1 Setting I/O Devices](#) and [13.2.1 Step 1: Enabling LPR Functions on PC LPR](#) in [GV-VMS User's Manual](#) and [GV-ASManager User's Manual](#), respectively.

- **Step 3 Configuring for the Wiegand Reader on GV-ASManager**

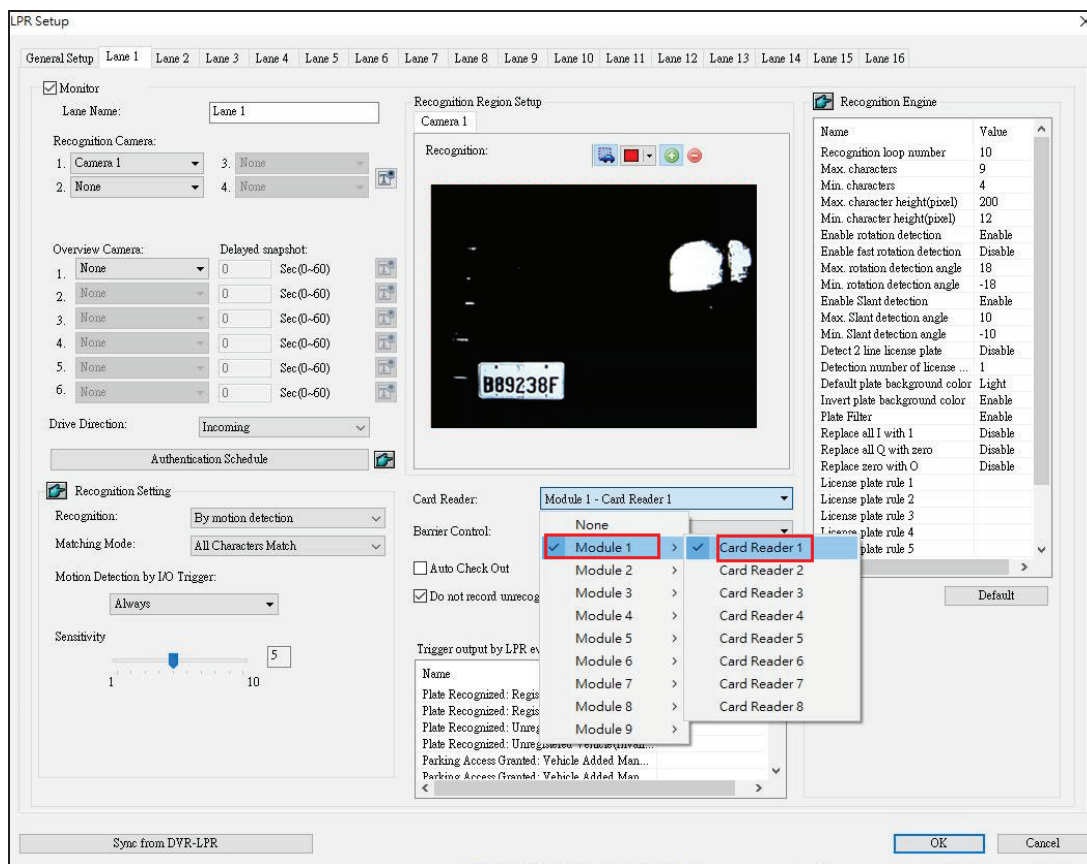
Configure for the Wiegand Reader and set the desired authentication schedule on GV-ASManager, see [Configuring the LPR Lane on GV-ASManager](#) below.



## Configuring the LPR Lane on GV-ASManager

**Note:** Prior to configuring for the extended GV-Wiegand Reader, make sure the GV-VMS LPR is added to GV-ASManager. For details, see [13.2.2 Step 2: Adding PC LPR to GV-ASManager](#) in [GV-ASManager User's Manual](#).

1. Double-click the GV-VMS LPR in the LPR window of GV-ASManager and select a desired **Lane** tab. This dialog box appears.



2. From the **Card Reader** dropdown list, select the **Module Number** corresponding to that of the GV-VMS LPR, and select **Card Reader 1** or **2**, correspondg to *Wiegand A* or *B*, depending on which Wiegand port the Wiegand Reader is connected to.

**Note:** If the GV-VMS LPR is only connected to one GV-I/O Box 4E, it is added as **Module 1** by default.

3. Click **Authentication Schedule** to set for the desired authentication mode(s).
4. Once the authentication schedule is set, click **OK**.