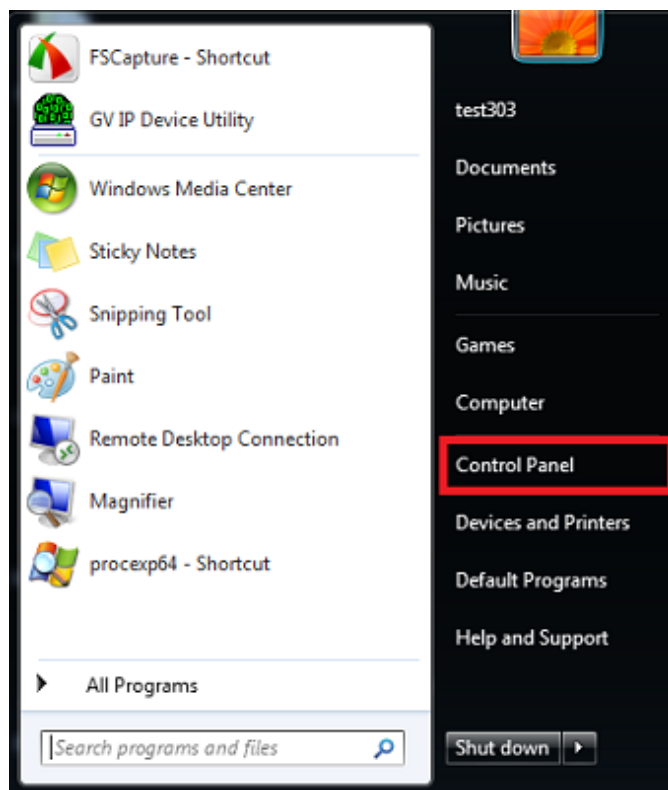




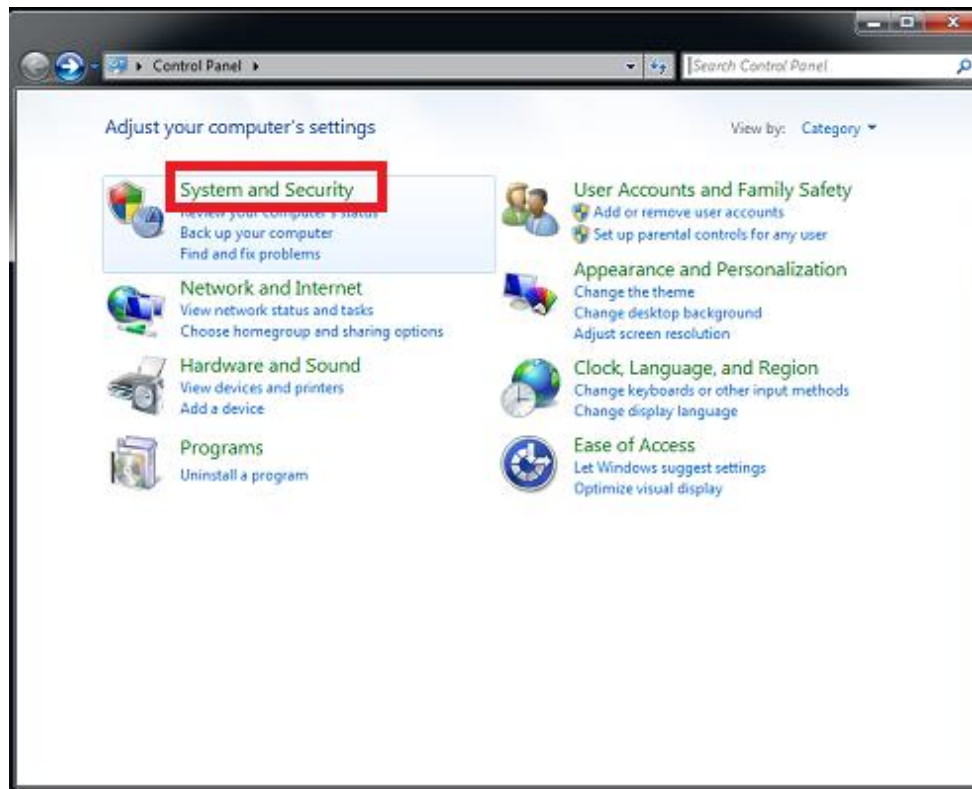
# Instruction for checking Windows Firewall whether it blocks our GeoVision program

1. Click the Control Panel from your Windows.

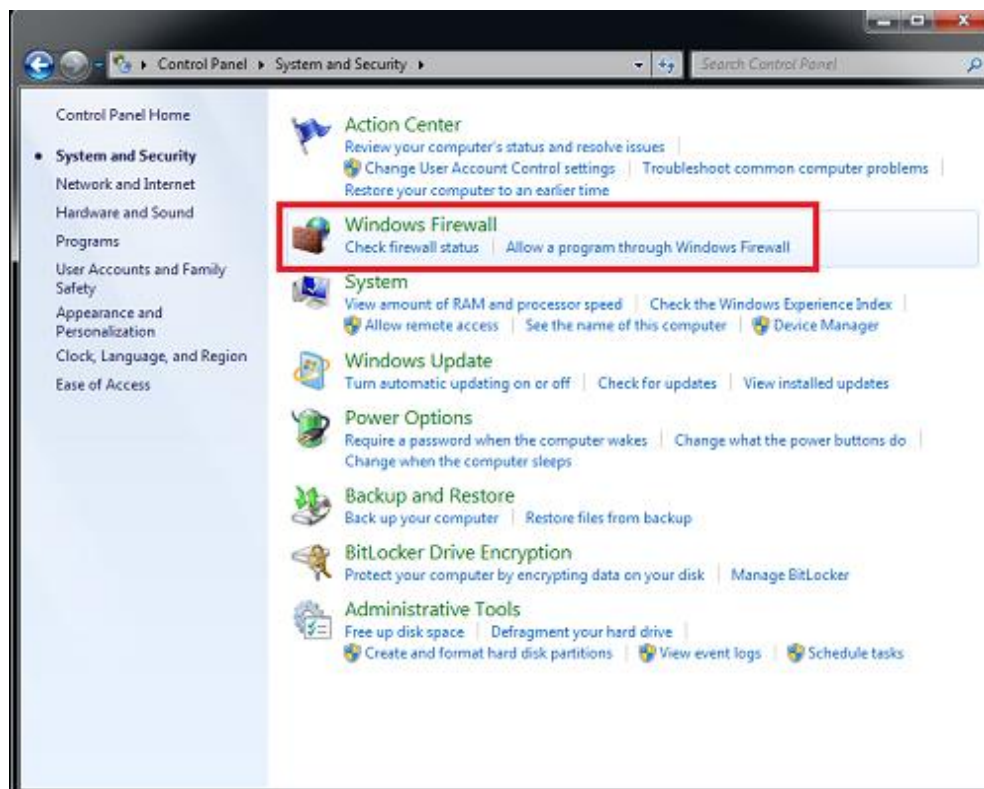




## 2. Click System and Security.

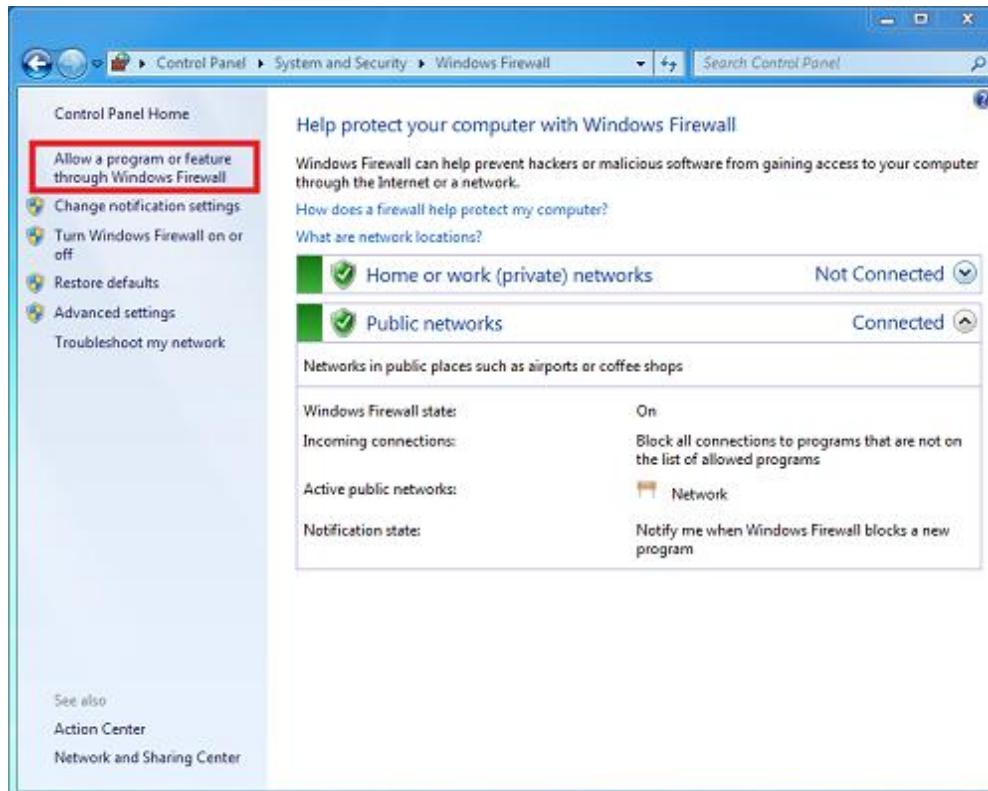


## 3. Choose Windows Firewall.





#### 4. Choose Allow a program or feature through Windows Firewall.

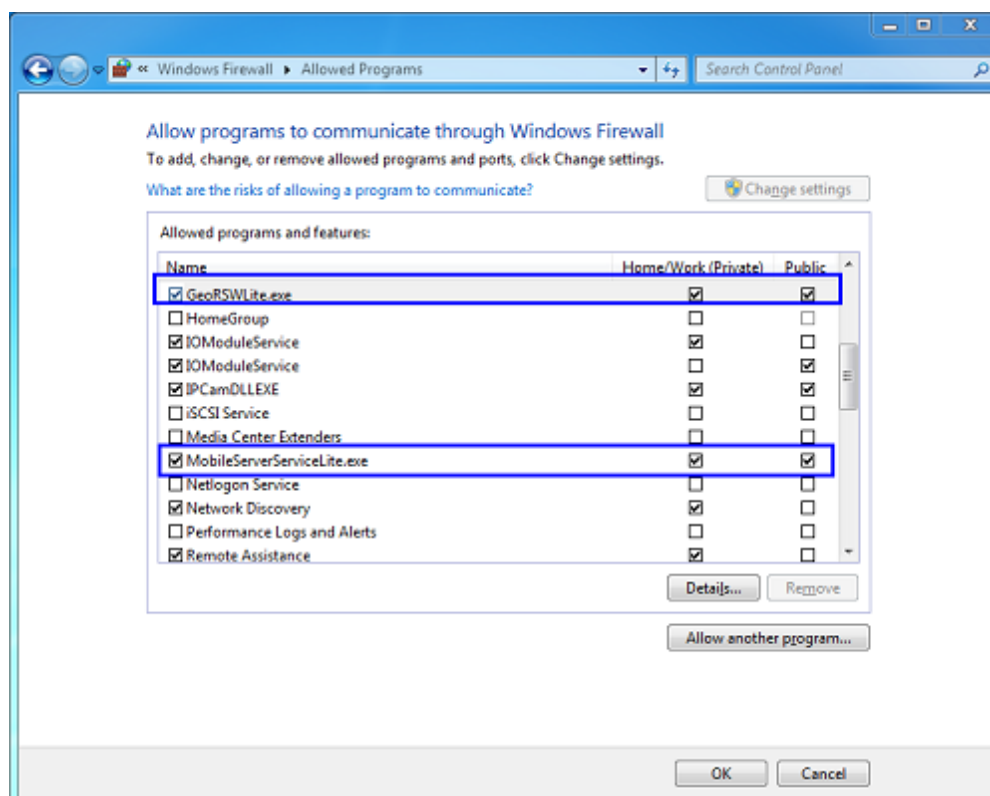


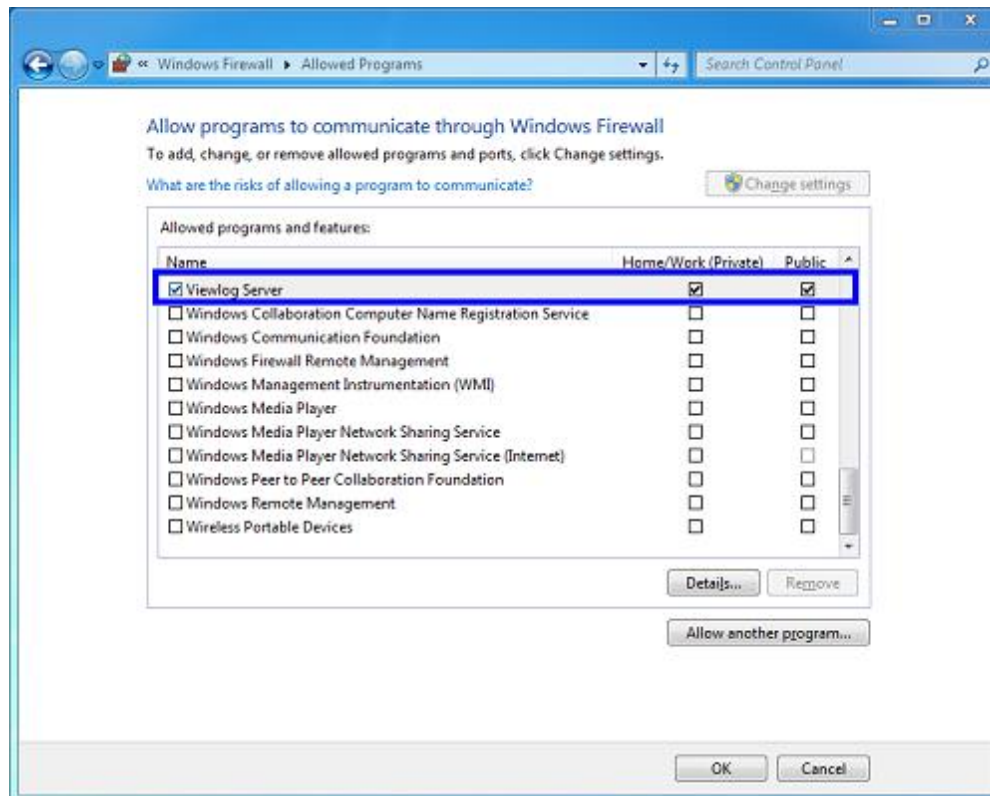
#### 5. After that, please have a check you have enable the checkbox as below for the 3 files.

**GeoRSLite.exe**

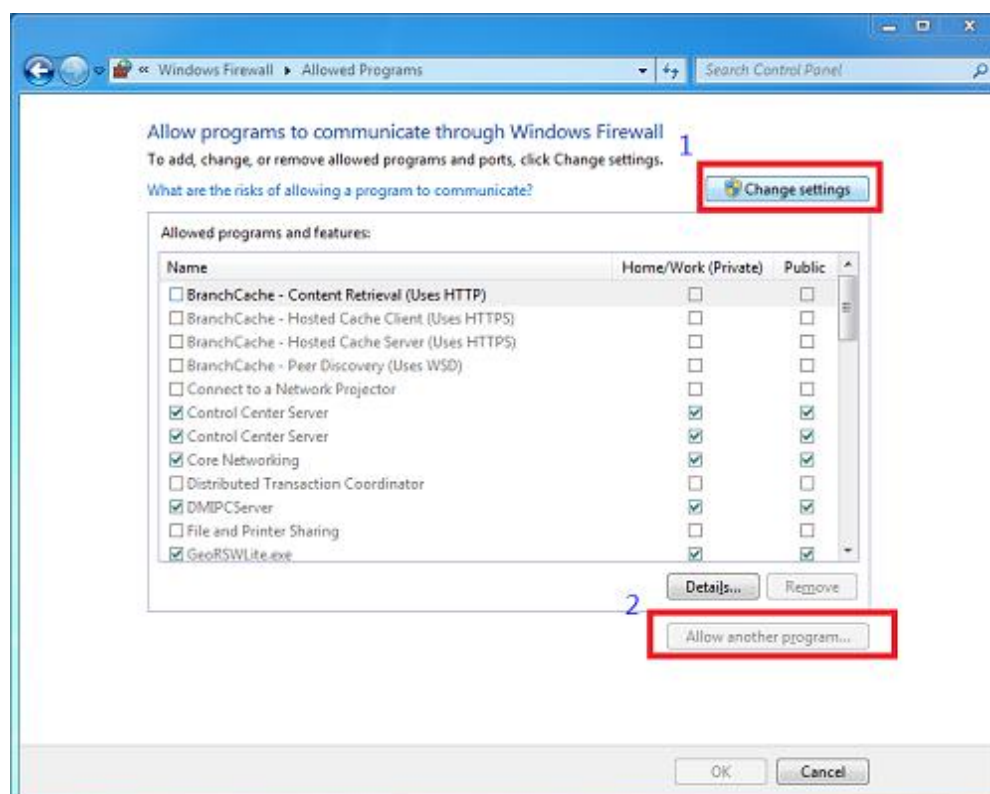
**MobileServerServiceLite.exe**

**Viewlog Server.exe**



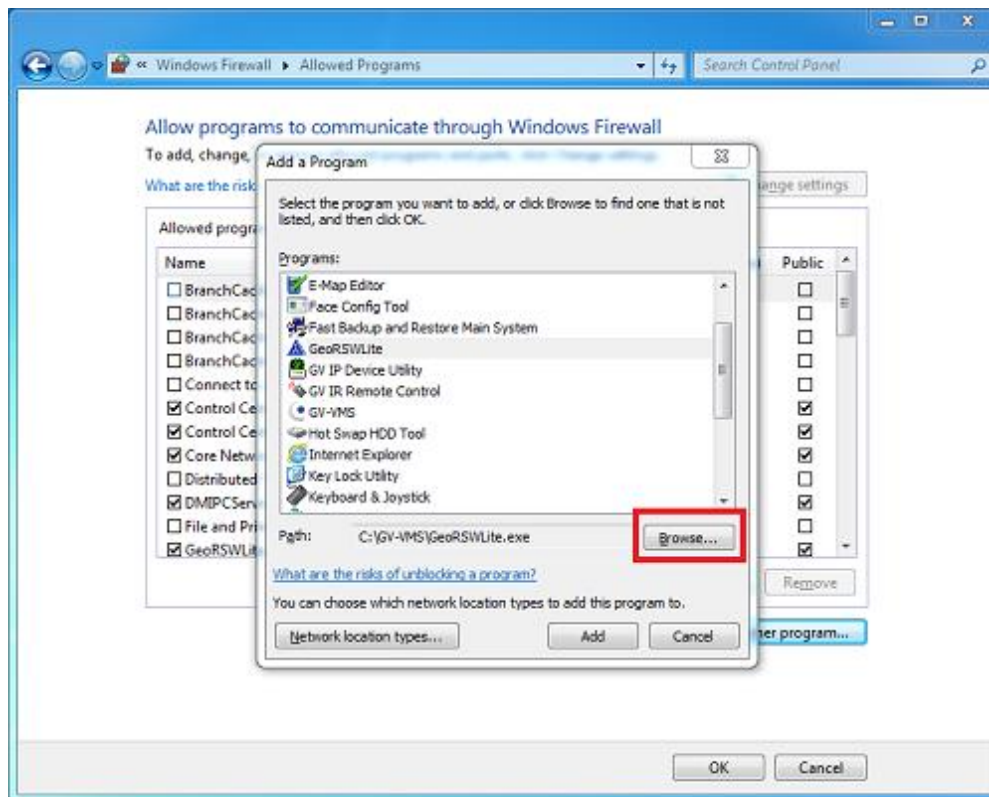


**6. If you cannot find the 3 files, please click Change settings then choose Allow another program.**

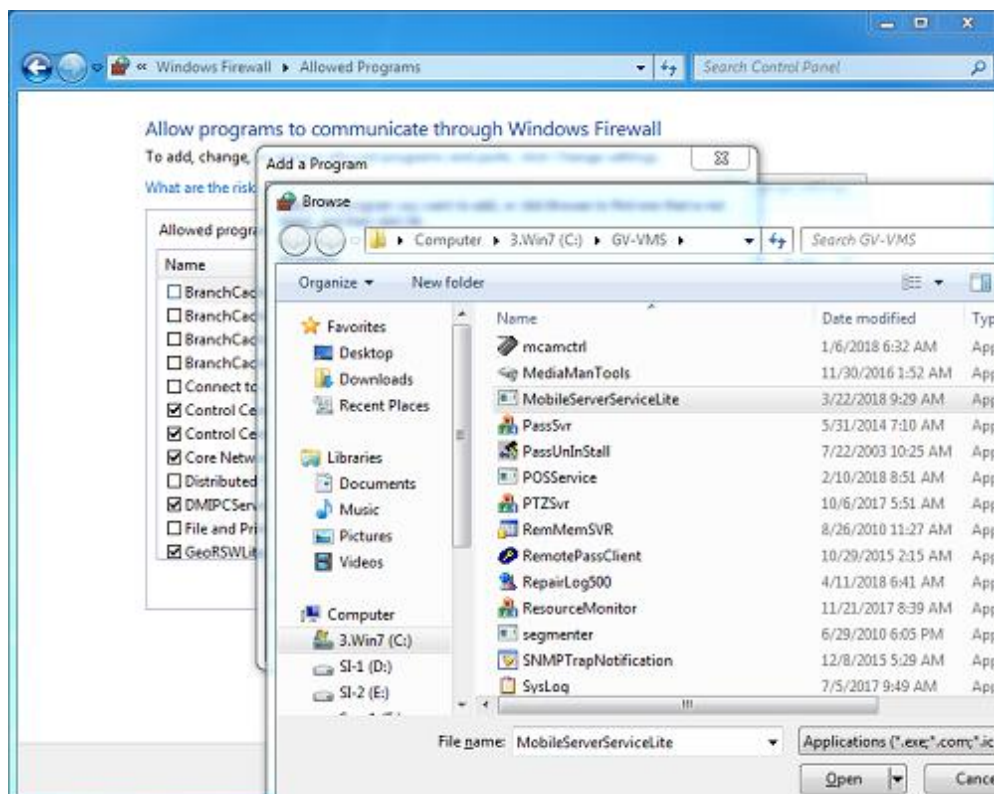




## 7. Click Browse to find → GeoRSWLite.exe / MobileServerServiceLite.exe / Viewlog Server.exe.

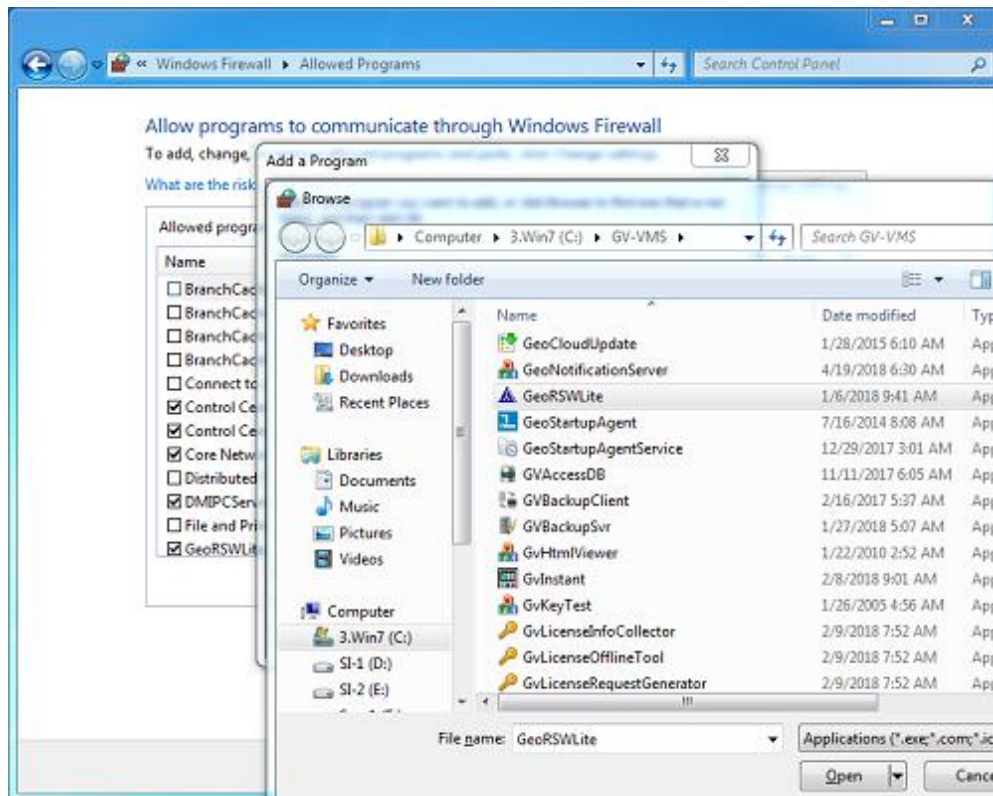


## MobileServerServiceLite.exe





## GeoRSWLite.exe



## Viewlog Server.exe

