



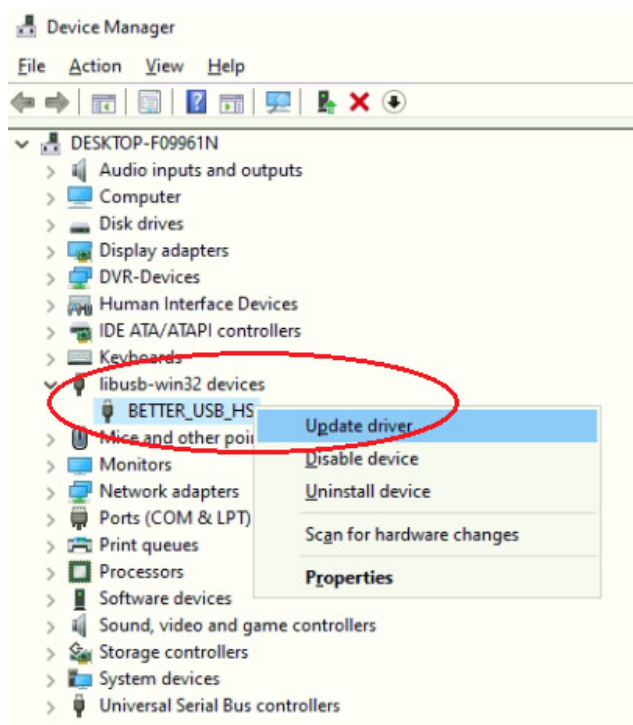
Instruction for update GV-JoystickV2's driver for working in Windows 10 update version 1809 or later.

1. Click the Device Manager from Control Panel >> System and Security >> System as below.

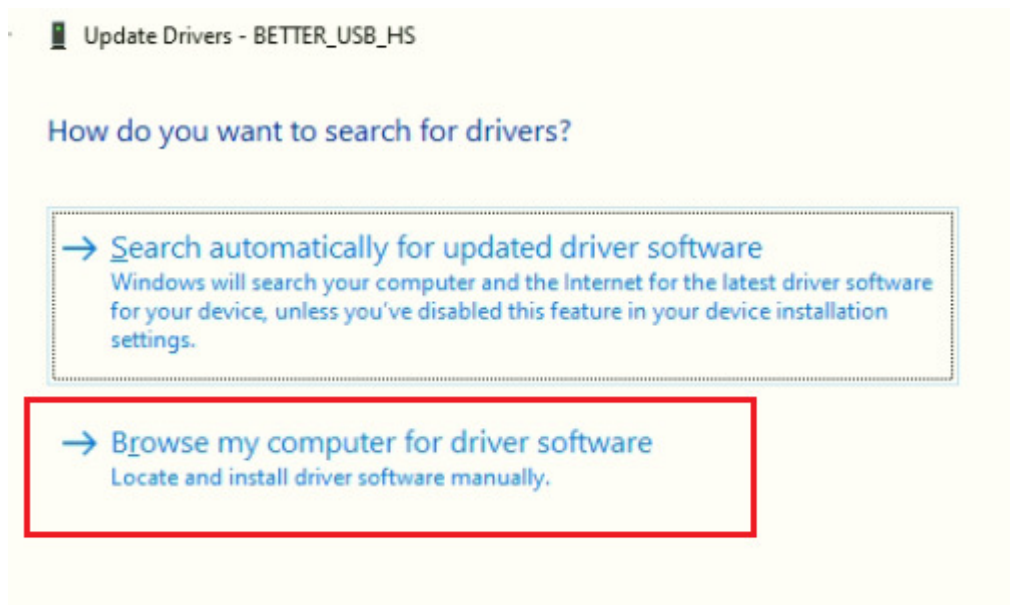
The screenshot shows the Windows 10 'System' control panel window. The breadcrumb path is 'Control Panel > System and Security > System'. The left sidebar contains links to 'Device Manager', 'Remote settings', 'System protection', and 'Advanced system settings'. The 'Device Manager' link is highlighted with a red box. The main content area displays system information under the heading 'View basic information about your computer'. The information includes: Windows edition (Windows 10 Pro), Processor (Intel(R) Core(TM)2 Quad CPU Q9400 @ 2.66GHz 2.66 GHz), Installed memory (RAM) (4.00 GB), System type (64-bit Operating System, x64-based processor), and Pen and Touch (No Pen or Touch Input is available for this Display). Below this, it shows computer name, domain, and workgroup settings (Computer name: DESKTOP-F09961N, Full computer name: DESKTOP-F09961N, Workgroup: WORKGROUP). At the bottom, it indicates that Windows is not activated and provides a link to 'Read the Microsoft Software License Terms' and a button to 'Activate Windows'.



2. Right click for the update.



3. Choose the second choice as below.





4. Click the Pick from a list of drivers as red square.

Update Drivers - BETTER_USB_HS

Browse for drivers on your computer

Search for drivers in this location:

C:\Users\Henry\Desktop\Driver

Browse...

Include subfolders

→ **Let me pick from a list of available drivers on my computer**
This list will show available drivers compatible with the device, and all drivers in the same category as the device.

Next Cancel

5. Choose USB Input Device then click Next.

Update Drivers - BETTER_USB_HS

Select the device driver you want to install for this hardware.

Select the manufacturer and model of your hardware device and then click Next. If you have a disk that contains the driver you want to install, click Have Disk.

Show compatible hardware

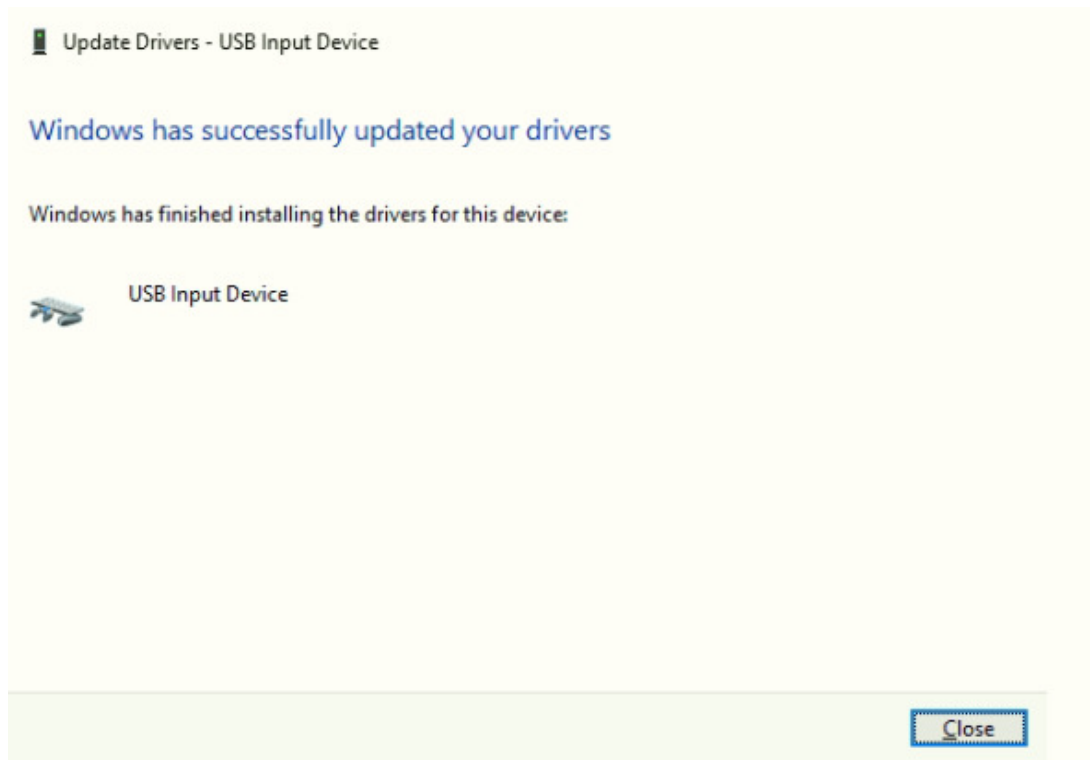
Model

- BETTER USB HS
- USB Input Device**

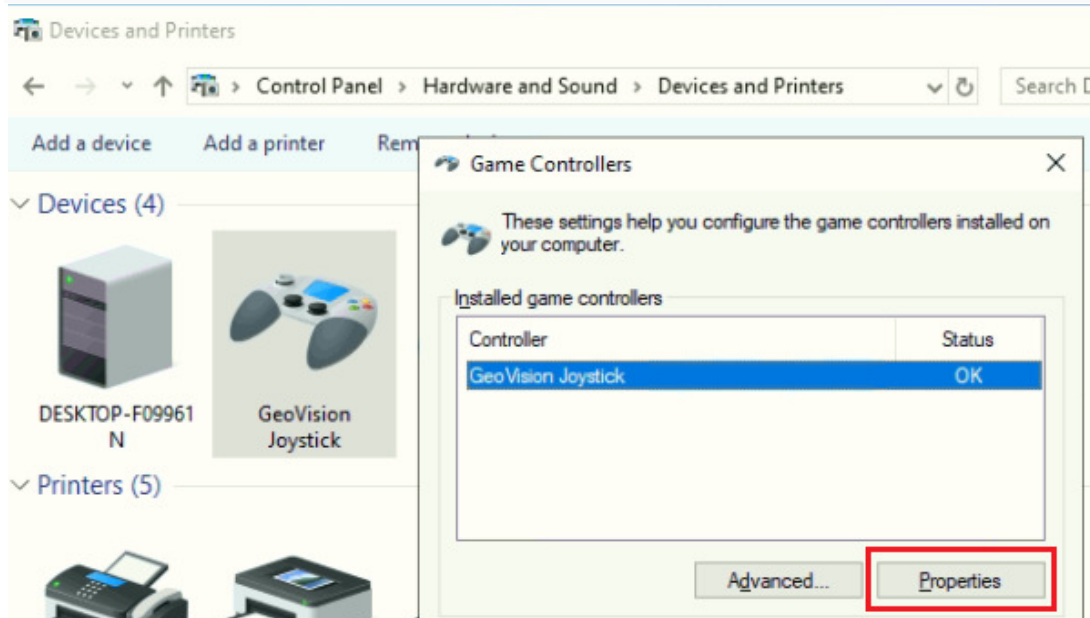
This driver is digitally signed. [Tell me why driver signing is important](#)

Have Disk...

Next Cancel



6. Re-plug the GV-Joystick V2 USB and check if the device is recognized in the following path. Control Panel\Hardware and Sound\Devices and Printers





7. Confirm that the device is operating normally

