

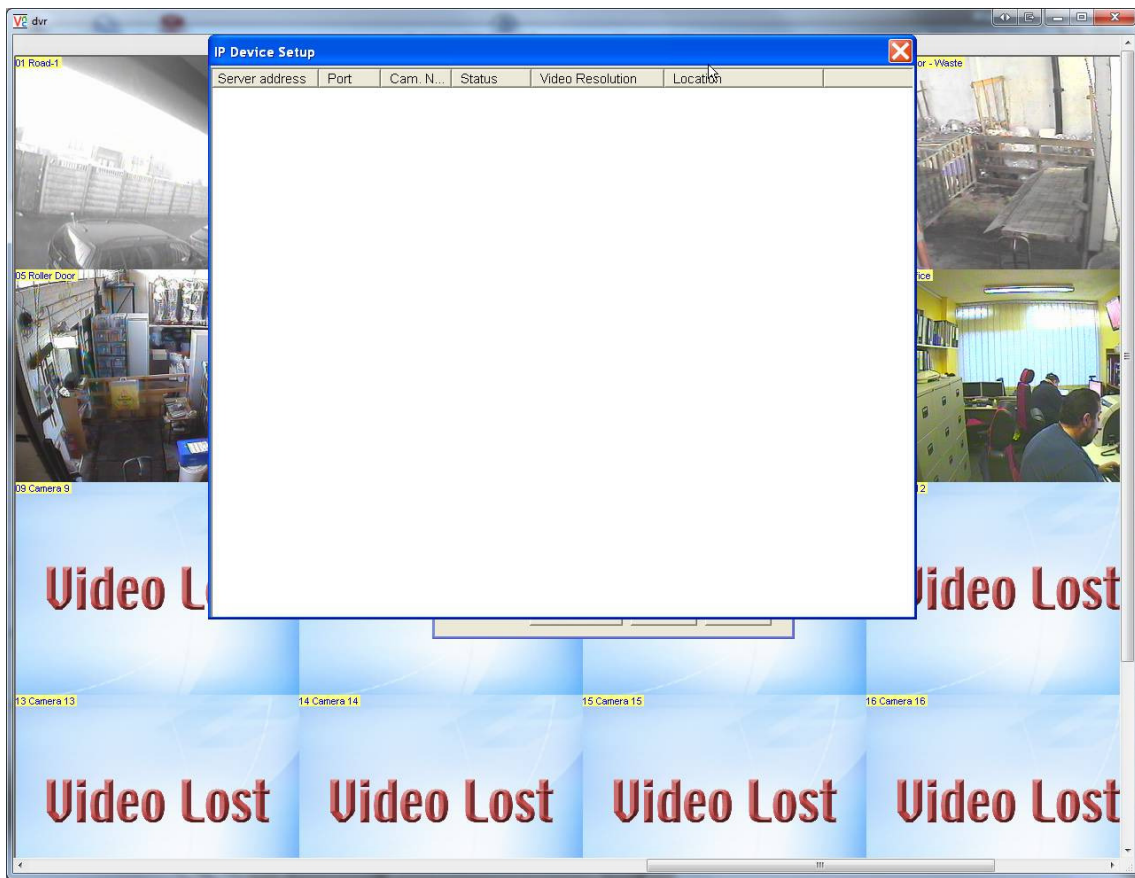
Missing or out of place buttons

Document Goals

This document will help you develop the following subject:

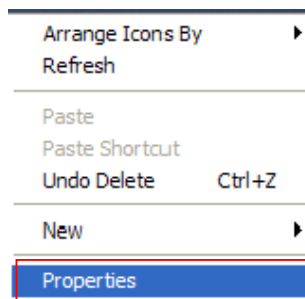
- ✓ Correct DPI setting

Issue: If you are seeing buttons missing or out of place. (as the picture below)



Solution:

1. Right click any empty place on the Windows desktop and select **Properties**.



2. Select the **Settings** tab, and click on **Advanced**.



3. Under the **General** Tab, change the **DPI setting** to **Normal size (96 DPI)** and click **OK**.

