



Solution to GV-ASManager's Database Overload

Article ID: GV4-17-01-05-al

Release Date: 01/05/2017

Applied to

GV-ASManager

Symptom

When the size of GV-ASManager's database exceeds 2 GB, even though the overloaded log files will be compressed automatically, other devices can lose connection to GV-ASManager during the compression process.

Solution

Microsoft SQL Server 2014 Express is a free version of SQL Server with a maximum database size of 10 GB. You can install and create a **Microsoft SQL Server** to be the database of GV-ASManager for additional data allowance to resolve this issue.

Installing Microsoft SQL Server Express

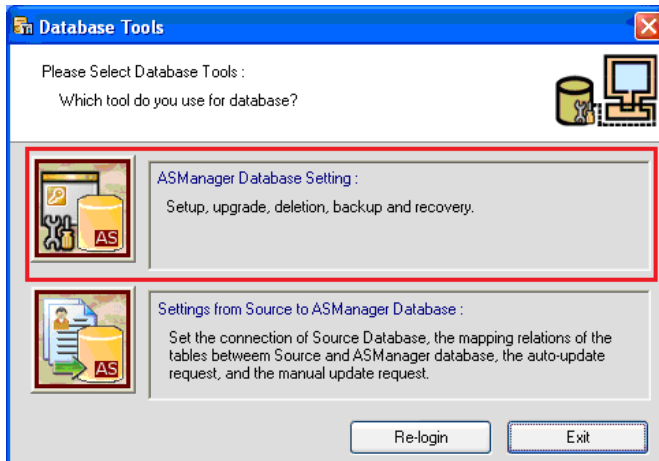
1. Go to the Download Center of Microsoft Website <https://www.microsoft.com/en-us/download> and search for the **SQL Server 2014 Express Edition**.
2. Locate the **SQL Server 2014 Express Edition** web page and download the executable file.
3. Run the executable file, and follow the on-screen instructions to install on your local computer.



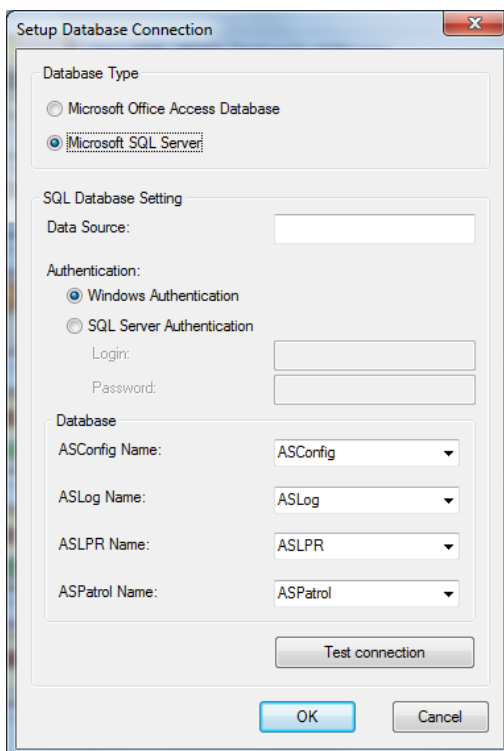
Creating a Microsoft SQL Server

After installing the SQL Server Expression Edition, you can now create a Microsoft SQL Server.

1. Run **ASDBManager.exe** from the program folder to access the Database Tools.
2. Click the **ASManager Database Setting** button on the Database Tools dialog box.



3. Click the **Setup MDB/MSSQL Database for ASManager** button. This dialog box appears.



4. Select **Microsoft SQL Server** to create a Microsoft SQL Server.



- a. Under SQL Database Setting, type IP address or domain name of the SQL server in the Data Source field, and select its authentication way.
- b. Under Database, name the databases for Configuration files and Log files that will be created on the SQL server separately.
- c. Click **Test Connection** to test the connection to the SQL server.
- d. Click **OK**. The databases are created in the SQL server.