



Focusing the Fixed-Lens Cameras

Article ID: GV3-14-10-31-t

Release Date: 10/31/2014

Applied to

- GV-FE
- GV-MDR, GV-MFD
- GV-CA, GV-CAW, GV-CB, GV-CBW
- GV-EBL, GV-EBX, GV-EFD, GV-EDR
- GV-UBL, GV-UBX

Summary

If your live view is sharp at the foreground but blurry at the background, follow the steps in this technical notice to have your fixed lens camera re-focused.



Blurry at the background



Adjusted, sharper background



For **GV-CA, GV-CAW, GV-CB, GV-CBW, GV-EBX, GV-UBL and GV-UBX**, please contact your sales representatives and send your camera back for RMA.

If your **GV-EBL** has a jagged plate under the lens, this lens is not designed for manual adjustment. Contact your sales representative and send your camera back for RMA.



Solution

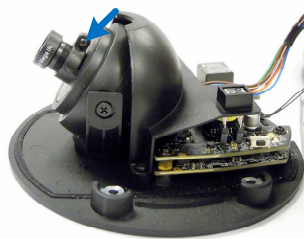
For **GV-EBL, GV-EFD, GV-EDR, GV-FE, GV-MDR, and GV-MFD**, follow the steps below to focus the camera using GV-IP Device Utility.

Opening the Housing Cover and Adjusting Focus

- For **GV-FE, GV-MDR and GV-MFD**, remove the housing cover with the supplied torx wrench and loosen the indicated screw that holds the camera lens.



GV-FE



GV-MDR



GV-MFD

Note: Some models of **GV-MDR** and **GV-MFD** may need a T6 screw driver to loosen the camera lens. If you have a problem of obtaining this type of screw driver, please contact our overseas offices for further assistance. An example of T6 screw driver:





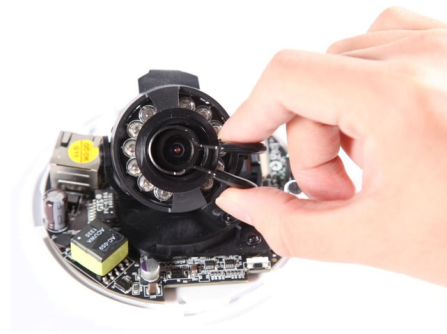
- For **GV-EBL** and **GV-EFD**, rotate and remove the housing cover.



- For **GV-EBL / FE / MDR / MFD**, grip the lens and rotate to adjust the focus. For **GV-EFD**, use the supplied focus adjustment clip to help you grip and adjust the focus.



GV-EBL



GV-EFD

- For **GV-EDR**, remove the housing cover with the supplied torx wrench and use the supplied focus adjustment clip to adjust the focus.




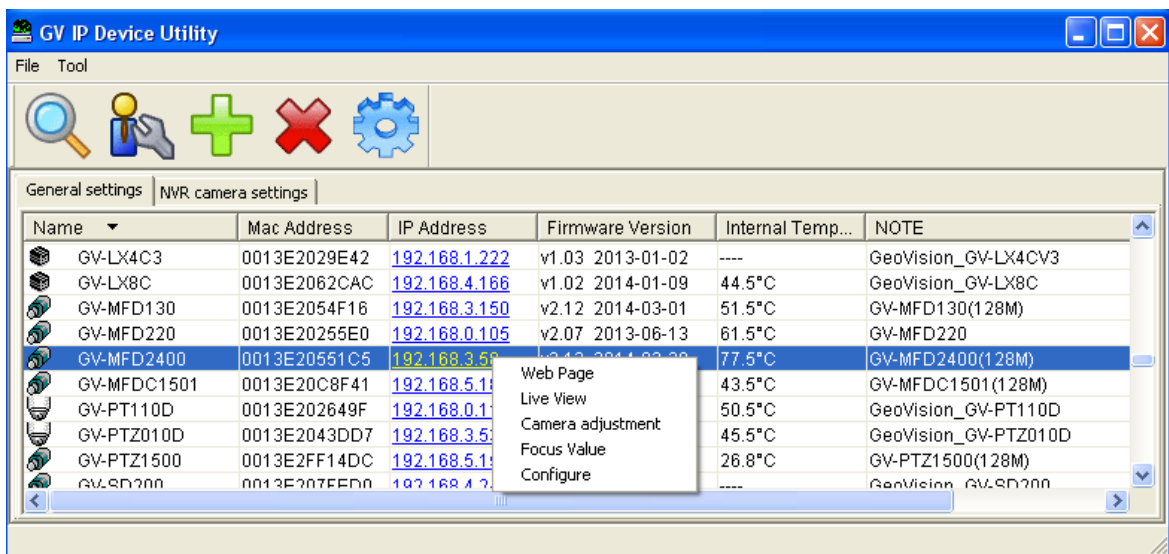


Using the GV-IP Device Utility to Adjust the Focus

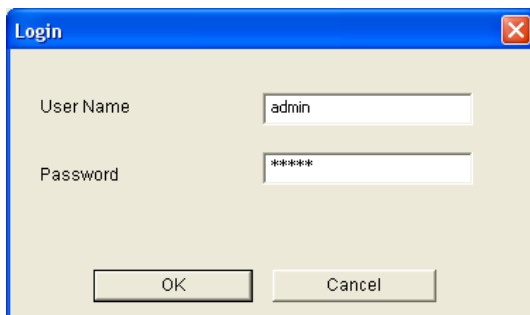
1. Install and launch the GV-IP Device Utility program. You can download the latest version from: http://www.geovision.com.tw/english/5_8.asp#

Note: The PC installed with the GV-IP Device Utility must be under the same LAN with the GV-IP Camera you wish to configure.

2. On the GV-IP Device Utility window, click the  button to search for the camera connected under the same LAN.
3. Click the IP Address of the camera. A drop-down list appears.

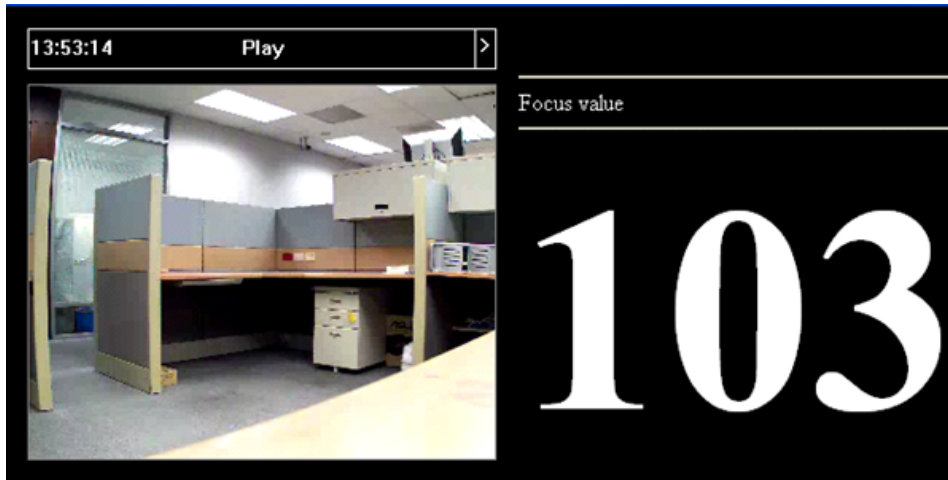


4. Select **Focus Value**. The Login dialog box appears.

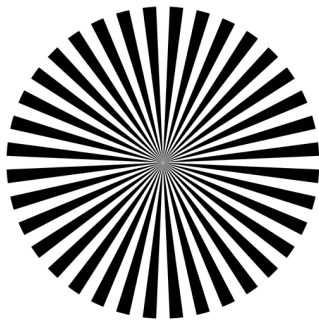




5. Type the user name and password of the camera selected. The default is **admin** for both user name and password. This window appears.



6. Put a Focus Test Chart in the camera view to help you focus the camera. You can download and print out the chart from: <http://ftp.geovision.tw/ftp/Neo/temp/ISO chart.zip>



A Focus Test Chart

7. Slowly move the camera lens until the focus is sharp and the focus value (step 8) reaches its maximum.